



पुना International School

Shree Swaminarayan Gurukul, Zundal

❖ WORKSHEET FOR CLASS 10TH

L 1 A LETTER TO GOD – G L Fuentes

➤ New Vocabulary

Crest

Predict

Draped

Hailstorm

Evident

Resolution

Contentment

Crooks



➤ Words – meanings

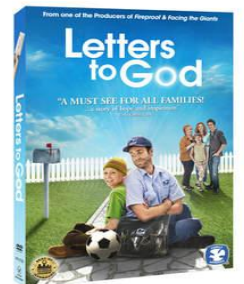
Affixed = Attached to something else

Downpour = A heavy fall of rain

Intimately = In a private and personal way

Deny = Refuse

Amiable = Having a friendly and friendly manner



Q.2 Answer the following questions in 30 to 40 words:

a) Who was Lencho ? What were his main problems ?

Ans: Lencho was a hard working farmer who lived on the crest of a low hill with his family. His was the only house in the entire valley. He eagerly waited for a good rain to have a good harvest but hailstorm destroyed his crop, so he needed money to sow his field again and support his family. So these were his main problems

b) Why and how did the postmaster help Lencho ?

Ans : The postmaster was mesmerised to see Lencho's faith I God and he didn't want his faith to be shaken. He asked his employees and friends to help Lencho. He was so determined to help Lencho that he

himself contributed a part of his salary for this act of charity. He collected seventy pesos and put them in an envelope containing only a single word as a signature God.

c) How much money did Lencho need ? How much did he get ?

Ans: Lencho asked God to send him hundred pesos to sow the crops and Support his family till the next harvest but when he received the letter from God which was sent by the post office employees, he saw only seventy pesos in it, less than he had demanded from God.

Q.3. Answer the following questions in 100 to 150 words:

a) “ Humanity still exists ” this is what we get to know after reading ‘ A Letter To God ‘in which firm faith in god of a poor farmer and helpfulness of the post office employees are aptly depicted thought . Write a paragraph on the values in it in about 120 – 150 words, Give the paragraph a suitable title.

“Existence of humanity”

Ans: The story” A Letter to God: written by GL Fuentes enforces our faith in humanity. After reading the story, we know that there are still people who help others without any self-interest.

Here the post master and other employees lay an example of humanity and kindness for others .

First they all laughed at Lencho’s letter to God because they knew that there Was no such person but they were really moved by Lencho’s faith in God . They decided to help him to keep his faith alive and firm.Even though it was not possible for them to collect hundred pesos and kept them in an envelope for Lencho. They signed on it ‘God’ except there own name .This act shows us the true picture of humanity and motivates us to be a noble and kind person.

b) Describe Lencho’s qualities in light of his faith in God. Do you have faith in God like Lencho ? Was Lencho’s reaction towards post office employees right?

Ans: Lencho was a poor farmer who totally depended on the harvest to survive and fulfil basic needs of his family . Once his crops were destroyed due to heavy rainfall and hailstones, he was afraid to think how his family would survive. He believed that God would help him in his plight.

He had firm faith in God , he believed that God would not let him be hungry . Now a days faith in God like Lencho's is almost impossible and unseen. People are very much aware that nobody is willing to help others without any self-interest. Lenchoe's reaction towards post office employees was not right or justified but it was just because of his innocence as he could not believe that God had done such a mistake. It were only the post office employees who had stolen money according to him

