



# Purnima International School

## Shree Swaminarayan Gurukul, Zundal

GRADE-1

SUMMATIVE ASSIGNMENT

SUB:- EVS

2018-19

### Q-1. Multiple choice questions.

**1). I make furniture for you.**

- a) Carpenter    b) Teacher    c) Baker    d) Tailor

**2). Who cleans your classroom?**

- a) Gardner    b) Teacher    c) Tailor    d) Sweeper

**3) Diwali is the festival of \_\_\_\_\_.**

- a) Sweets    b) Kites    c) Lights    d) Colours

**4). Republic day is celebrated on \_\_\_\_\_.**

- a) 25<sup>th</sup> January    b) 26<sup>th</sup> January    c) 26<sup>th</sup> February    d) 25<sup>th</sup> March

**5). Christmas is celebrated on \_\_\_\_\_.**

- a) 26<sup>th</sup> December    b) 25<sup>th</sup> December    c) 26<sup>th</sup> January    d) 25<sup>th</sup> March

**6). Name the animal that eat food grains.**

- a) Mice    b) Lion    c) Tiger    d) Dog

**7). Name the animals that eat insects \_\_\_\_\_.**

- a) Lizard    b) Cow    c) Dog    d) Hen

**8). Our national bird is \_\_\_\_\_.**

- a) Peacock    b) Parrot    c) Pigeon    d) Duck

**9). Where does the dog sleep?**

- a) Hutch    b) Kennel    c) Tree    d) Den

**10). Who treats our pets when they are ill?**

- a) Vet    b) Doctor    c) Nurse    d) Teacher

**11). Very big plants are called \_\_\_\_\_.**

- a) Trees    b) Plants    c) Roots    d) Stem

12). \_\_\_\_\_ is a tree.

- a) Mango      b) Climber    c) Rose      d) Roots

13). Fastest means of transport is \_\_\_\_\_

- a) Ship      b) Aeroplane    c) Train      d) Boat

14). \_\_\_\_\_ is means of land transport.

- a) Train      b) Aeroplane    c) Ship      d) Boat

15). Colour of the sky is \_\_\_\_\_

- a) Black      b) Blue    c) White      d) Green

16). A rainbow has \_\_\_\_\_ colours.

- a) Seven      b) Six      c) Five      d) Two

17). A globe is a model of the \_\_\_\_\_.

- a) Earth      b) Moon    c) Stars      d) Cloudy

18). \_\_\_\_\_ are flat land.

- a) Plains      b) Mountains    c) Hills      d) High

19). \_\_\_\_\_ is the water transport.

- a) Trains      b) Bus      c) Ship    d) Aeroplanes

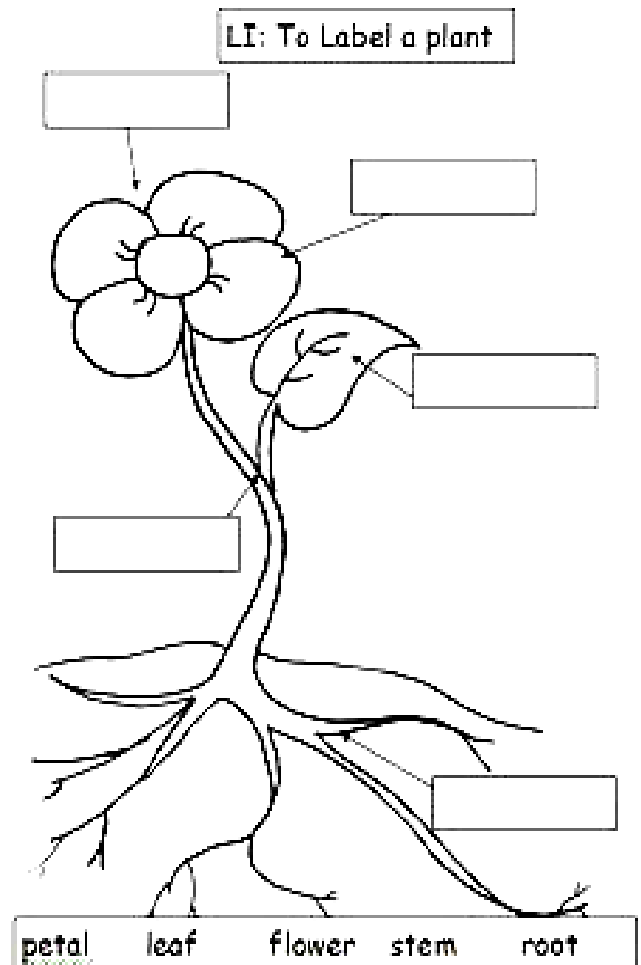
20). Where do you see the sun, moon and stars?

- a) Sky      b) Night      c) Day    d) Light

**Q-2. Write the True/False.**

1. Snakes have legs. \_\_\_\_\_      2. Cows give birth to babies. \_\_\_\_\_
3. Birds have wings. \_\_\_\_\_      4. Insects are big animals. \_\_\_\_\_
5. Fishes are kept in an aquarium. \_\_\_\_\_      6. A dog is a wild animal. \_\_\_\_\_
7. Very big plants called trees. \_\_\_\_\_      8. Rose is a big tree. \_\_\_\_\_
9. Money plant is a climber. \_\_\_\_\_      10. Train moves on land. \_\_\_\_\_

**Name the parts of plants.**



11. A small ship is called a boat. \_\_\_\_\_ 12. A rainbow has ten colors. \_\_\_\_\_
13. We live on the earth. \_\_\_\_\_ 14. The blue part on a globe is land. \_\_\_\_\_
15. We grow food on land. \_\_\_\_\_ 16. Railway runs on land. \_\_\_\_\_
17. Train is the fastest means of transport. \_\_\_\_\_ 18. Rabbits live in a kennel. \_\_\_\_\_

**Q-3. Circle the correct word.**

1. Grass / Neem is a small plant.
2. Trees / Climbers are weak plants.
3. Cactus / Grass is a plant with thorns.
4. The sweet pea / cactus plant is a climber.
5. Fish/monkey lives on the tree.
6. Water / Land / Plains is coloured blue on a globe.
7. Most people live on flat land called hills/ plains/ globe.
8. Land between two hills is called a valley / mountain/ water.

**Q-4. Fill in the blanks.**

[ sky, brightly, food grains, sea, moon , stars, mountains, plains, valley, railway track, dark, globe, rainbow, earth, shatabdi ,six ]

1. Insect has \_\_\_\_\_ legs.
2. Mice and hens eat \_\_\_\_\_.
3. Aeroplanes fly in the \_\_\_\_\_.
4. Trains run on railway \_\_\_\_\_.
5. \_\_\_\_\_ Express is India's fastest train.
6. Ship sails on the \_\_\_\_\_.
7. The sun shines \_\_\_\_\_.
8. On a rainy day, the sky looks \_\_\_\_\_.
9. Sometimes there is a \_\_\_\_\_ in the sky after the rains

10. We see \_\_\_\_\_ and \_\_\_\_\_ at night in the sky.
11. We live on \_\_\_\_\_.
12. \_\_\_\_\_ is coloured blue on the Earth.
13. Most people live on flat land called \_\_\_\_\_.
14. Apple and cherry trees grow on \_\_\_\_\_.
15. Land between two hills are called a \_\_\_\_\_.

**Q-5. Write two name things.**

1. They eat food grains \_\_\_\_\_, \_\_\_\_\_
2. They are without legs \_\_\_\_\_, \_\_\_\_\_
3. Flesh of other animals \_\_\_\_\_, \_\_\_\_\_
4. Small plants \_\_\_\_\_, \_\_\_\_\_
5. See in the sky on a sunny day \_\_\_\_\_, \_\_\_\_\_
6. See in the sky at night \_\_\_\_\_, \_\_\_\_\_
7. Do not see at night \_\_\_\_\_, \_\_\_\_\_
8. We grow on the land \_\_\_\_\_, \_\_\_\_\_
9. They moved on the water \_\_\_\_\_, \_\_\_\_\_
10. Climber names \_\_\_\_\_, \_\_\_\_\_

**Q-6. Answer the following questions.**

1. Which festival is called the festival of lights?

A- \_\_\_\_\_

2. Write two reptiles name.

\_\_\_\_\_.

3. Where does dog sleep?

A- \_\_\_\_\_.

**4. Who treats our pets when they are ill?**

A- \_\_\_\_\_.

**5. Name three trees.**

A- \_\_\_\_\_.

**6. Name two small plants.**

A- \_\_\_\_\_.

**7. Name two climbers.**

A- \_\_\_\_\_.

**8. What is the fastest means of transport?**

A- \_\_\_\_\_.

**9. How many colours are there in rainbow?**

A- \_\_\_\_\_.

**10. What do you see in the sky at night?**

A- \_\_\_\_\_.

**11. What is a globe?**

A- \_\_\_\_\_.

**12. What is a valley?**

A- \_\_\_\_\_.

**13. What is a Flat land?**

A- \_\_\_\_\_.

**14. Name three types of food we grow.**

A- \_\_\_\_\_.

**15. Who gives us heat and light?**

A- \_\_\_\_\_.

**Q-6. Match the following.**

Honeybee

hutch

Fish

den

Monkey

beehive

Lion

pond

Rabbit

tree

Fishes are kept in

we take them to a doctor

When pets fall ill

kennel.

Rabbits live in a

an aquarium

A dog sleeps in a

hutch

Rainbow

moon, stars

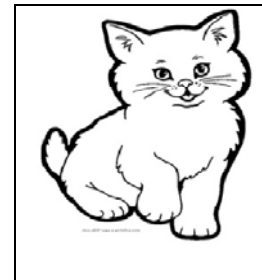
At night

rainy days

**Q-7. Write paragraph on**

**My Pet :**

- I have a pet \_\_\_\_\_ and its name is \_\_\_\_\_.
- Its colour is \_\_\_\_\_.
- It is very \_\_\_\_\_ .
- It likes to have \_\_\_\_\_ but her favourite food is \_\_\_\_\_.
- I \_\_\_\_\_ my pet Rosy.



**My School:**

- The name of my school is \_\_\_\_\_
- Our principal's name is \_\_\_\_\_
- Our school is surrounded with \_\_\_\_\_
- There are \_\_\_\_\_ rooms in my school
- I \_\_\_\_\_ my school.

**Q-8. Identify the festival name and write it below.**



**Q-9. Can you identify me , who am I ?**



**Q-10. Write the name of these vehicles:**

