



PERIODIC ASSIGNMENT - I [2021-22]

Grade – 4

Subject - Computer

Syllabus – Ch 1,2

Q 1) Choose the correct options in the following questions:-

1. Which of the following is an input device?

- a. plotter b. touchpad c. printer d. projector

2. Which of the following is a display screen?

- a. touch screen b. touchpad c. projector d. plotter

3. Which of the following is mostly used to play games?

- a. touch screen b. touchpad c. joystick d. printer

4. Which of the following is not an output devices?

- a. printer b. scanner c. speaker d. projector

5. Which of the following devices prints large maps and banners?

- a. printer b. scanner c. plotter d. projector

6. A device used to draw with a pen is a..

- a. plotter b. joystick c. graphic tablet d. projector

7. A removable chip used to store data is ..

- a. memory card b. scanner c. plotter d. joystick

8. What will you do to open a file?

- a. double click on it b. right click on it c. left click on it d. copy

9. Which of the following are small pictures present on the desktop?

- a. folders b. files c. icons d. programs

10. Which of the following acts as a dustbin for a computer?

- a. Computer b. Recycle bin c. Notification d. Task bar

11. Which of the following is a container for storing files?

- a. File b. Folder c. Start menu d. Recycle bin

12. Which of the following is used to go to your computers programs, folders and settings?

- a. Start menu b. All programs c. Task bar d. Notification area

13. Which thing is used to capture photos and videos?

- a. Touchpad b. Monitor c. Digital camera d. Web cam

14. The thing which is used to print text and pictures on paper.

- a. projector b. printer c. plotter d. none of these

15. Which device is used to move the pointer on the screen?

- a. Mouse b. Webcam c. Printer d. Scanner

16. The device which is used to input sound such as voice and music is called?

- a. joystick b. digital camera c. microphone d. mouse

17. The long bar present at the bottom of the desktop is called.....

- a. Start menu b. Desktop icons c. Task bar d. none of these

18. When you switch on a computer the operating system is loaded, what is this process called?

- a. saving b. renaming c. booting d. copying

19. From which button you can display the clock and calendar?

- a. Date and time b. Launch bar c. Title bar d. Task bar

20. The rename option can change the _____ of the folder.

- a. Place b. Time c. name d. None of these

21. This scanner has a flat, glass surface on which the document or picture to be scanned is placed.

- a. Printer b. Flatbed scanner c. Web cam d. Touchpad

22. You can use your fingers to touch items on a _____.

- a. Webcam b. Mouse c. Touch screen d. Scanner

23. Printer is a _____ device.

- a. input b. output c. chip d. none of these

24. The _____ is the first program to be installed into a new computer.

a. Antivirus

b. Operating system

c. Explore icons

d. XPS viewer

25.A _____ can be created, selected, opened, renamed, copied, moved or deleted.

a. File

b. Recycle bin

c. Library

d. Task bar

Q 2) Identify the word and put it correct place:-

Windows 7 desktop

Start Button

Date & Time

Desktop Icon

Taskbar

Start Menu

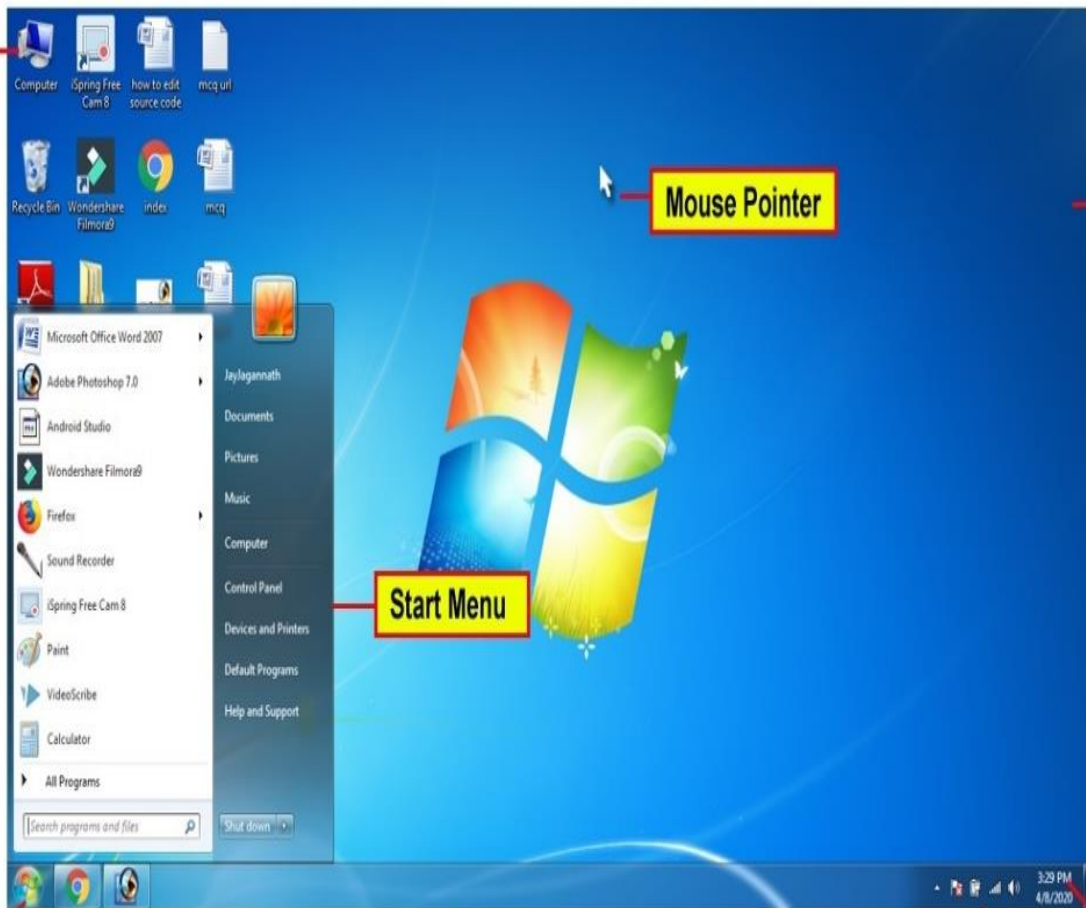
Mouse pointer

Notification Area

Icon

Desktop

Icon



Mouse Pointer

Desktop

Start Menu

Start Button

Taskbar

Notification Area

Date & Time