



**पुर्णिमा International School**

**Shree Swaminarayan Gurukul, Zundal**

*Class -II*

*Super Computer*

*Exercise Corner*

*2<sup>nd</sup> semester Copy*

*Year- 2022-23*

# Contents

**CHAPTER 4 The Keyboard**

**CHAPTER 5 The Mouse**

**CHAPTER 6 Fun with Paint**

**CHAPTER 7 Paint Tools**



## Exercise Corner



### A. Circle the correct answer.

1. There are \_\_\_\_\_ Arrow keys on a keyboard.  
a. 3 b. 4
2. We use the \_\_\_\_\_ key to type in capital letters.  
a. **Caps Lock** b. Backspace
3. We can also use the \_\_\_\_\_ key to type in capital letters.  
a. Backspace b. **Shift**
4. We use the delete key to delete characters typed on the \_\_\_\_\_ side of the cursor.  
a. left b. **Right**

### B. Change the underlined words to corrects these sentences. Write the Correct words in the blanks.

1. We use keys to write in a notebook. **Pencils**
2. Whatever we type can be seen on the mouse. **Monitor**
3. We use the number keys to type words and sentences. **Alphabet**.
4. We use the Enter keys to type numbers. **Number**
5. The space bar is the Shortest key on the keyboard. **Longest**

### C. Neha has typed some sentences . She has not got all the spelling correct. Name the key should use to delete the incorrect letter by looking at the position of the cursor.

1. Keep your surrounding clean.
2. Do not / waste food.
3. Help / p other.

Backspace  
Delete  
Backspace

**D. Answer in the one word.**

1. Which key do we use to type in capital letters ?

Ans. **Caps lock.**

2. Name the blinking on the monitor that shows where we can start typing?

Ans. **Backspace.**

2. Which key do we use to move the cursor to the text line?

Ans. **Enter Key.**

4. Which key do we use to delete letters and numbers?

Ans. **Backspace Key**



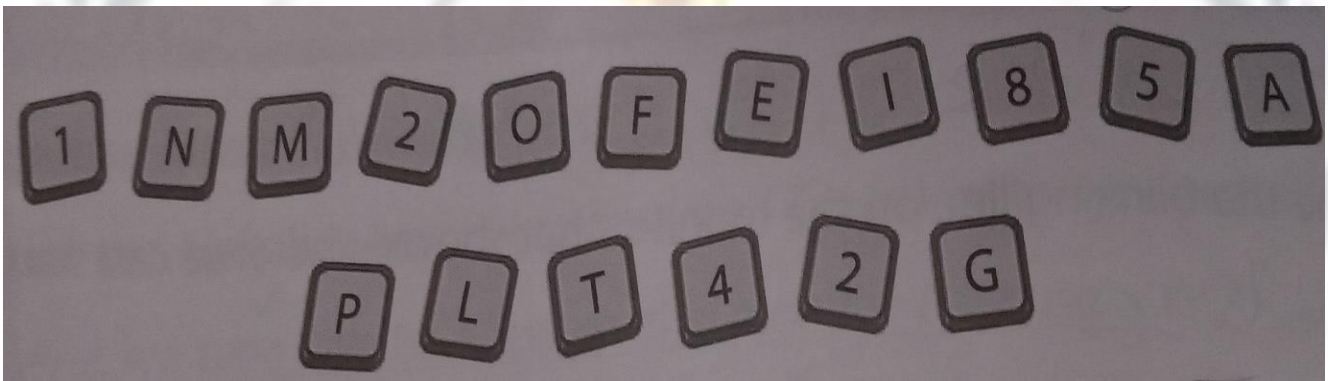
E.Count and write the number of following keys on a keyboard.

Backspace      1



Arrow                    4  
Space bar                1  
Shift                      2

F. Identify the Alphabet keys and Number keys.



Alphabet keys- N M O F E A P L T G

Number keys- 1 2 8 5 4 2



Chapter -5 The Mouse



## Exercise Corner

A. Write T for True or F for Fales.

- 1.A mouse has four buttons. (F)
- 2.A wireless mouse work without a wire. (T)
- 3.We use a mouse to point at things on the monitor. (T)
- 4.We use left-click to select an item on the monitor. (T)

B. Fill in the blanks. Choose words from the box.

Right-click	drag-and-drop	left-click	pointer
-------------	---------------	------------	---------

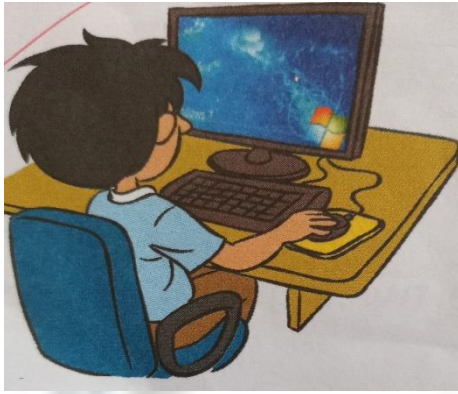
1. When we move the mouse ,we see the mouse **pointer** move on the monitor.
2. We use **left -click** to select an item on the monitor.
3. We use **drag-and-drop** to move an item on the monitor.
4. We use **right-click** to open a list of options on the monitor.

C. Which button of the mouse will you press for a left-click? Mark with 'L'. Which button do you press for a click ? Mark 'R'.



D. Look at the pictures and complete the sentences.

1. Hasan is using the mouse with his **right** hand.
2. Riya is using the mouse with her **left** hand.



**E. Answer these questions.**

**1. Write different parts of a computer mouse.**

Ans. Wire, scroll, left-button, right button.

**2. Write any two uses of a mouse?**

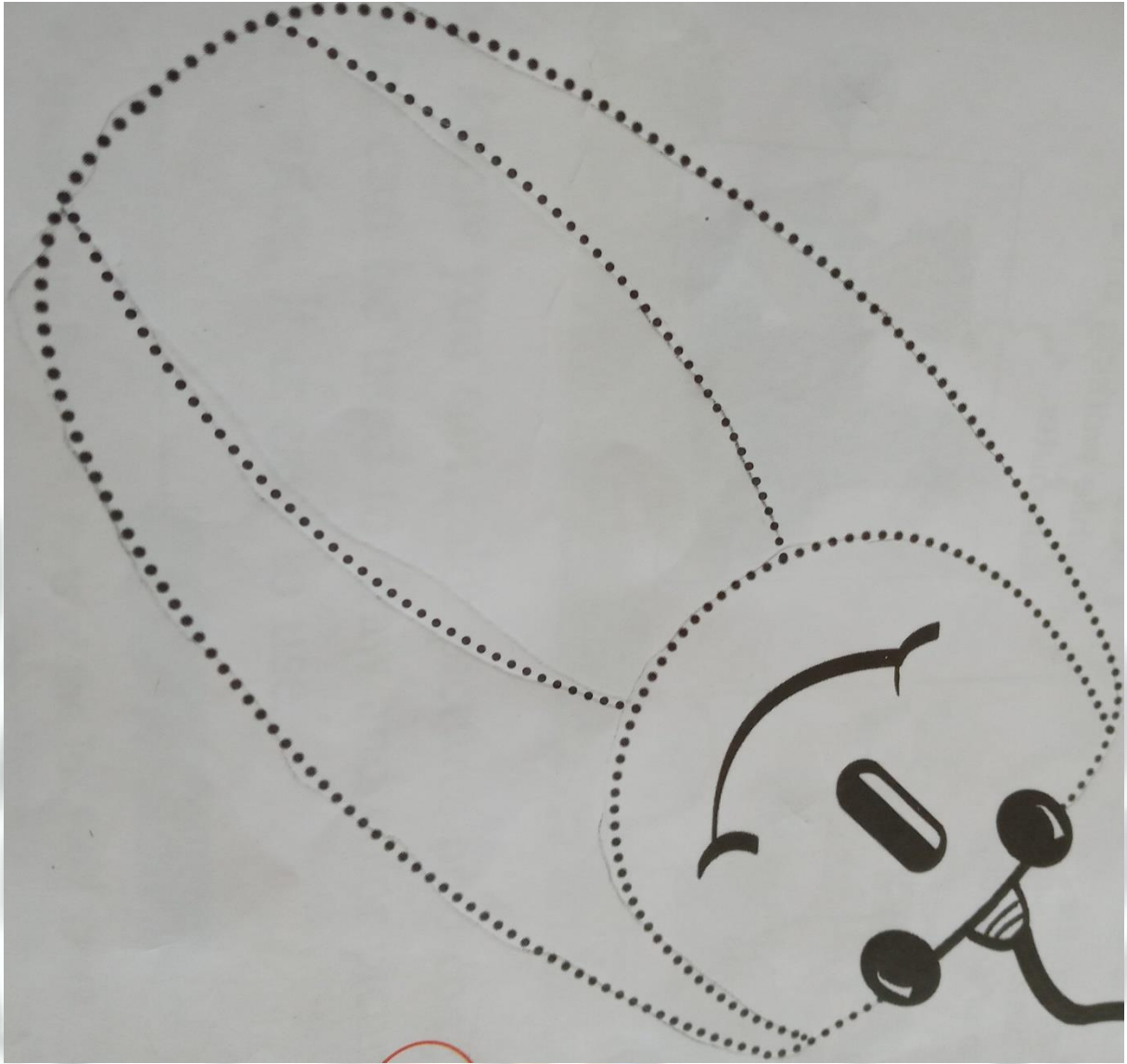
Ans. 1..Right- click – to open list of option.

2.Left-click – select item.

**3. What is a double – click?**

Ans. Pressing the left button twice quickly is called a double – click.

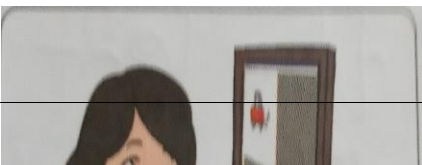
**F. Join the dots. Colour the mouse with a colour you like.**



G. Tick ( ) the good computer room manners .Put a cross ( ) against the bad ones.

1. Rima pulls the wire of  
the mouse.

2. Mansi presses the keys softly.





3. Asif turns on the power button  
Without the help of an adult.



4. Peter eats food while  
working on a computer.



## CHAPTER – 6 Fun with Paint

Exercise Corner :-

A. Fill in the blanks. Choose words from the box.



Title bar   Pencil   Paint   Drawing area

1. We use the **Paint** program to draw and color on a computer.
2. The top part of the paint screen is **Title bar**.
3. The white part of the paint screen is the **Drawing area**.
4. The **Pencil** tool is found in the Tools group.

**B. Number the steps in the correct order to start the paint program.**

Left click on Accessories.

Left click on the Start button .

Left click on Paint.

Left click on All Programs.

**C. Name these tools.**

Line

Pencil

Fill with the colour

Eraser

**D. Answer these questions .**



1. Which tool do we use to fill the color in the drawing ? Fill the colour tool.
2. Which tool do we use to erase a mistake in a drawing ? Eraser
3. Write the steps to close the paint program. Left click on the Close button.

E. Label the following parts of the paint screen .

1. Paint button

2. Title bar

3. Drawing area

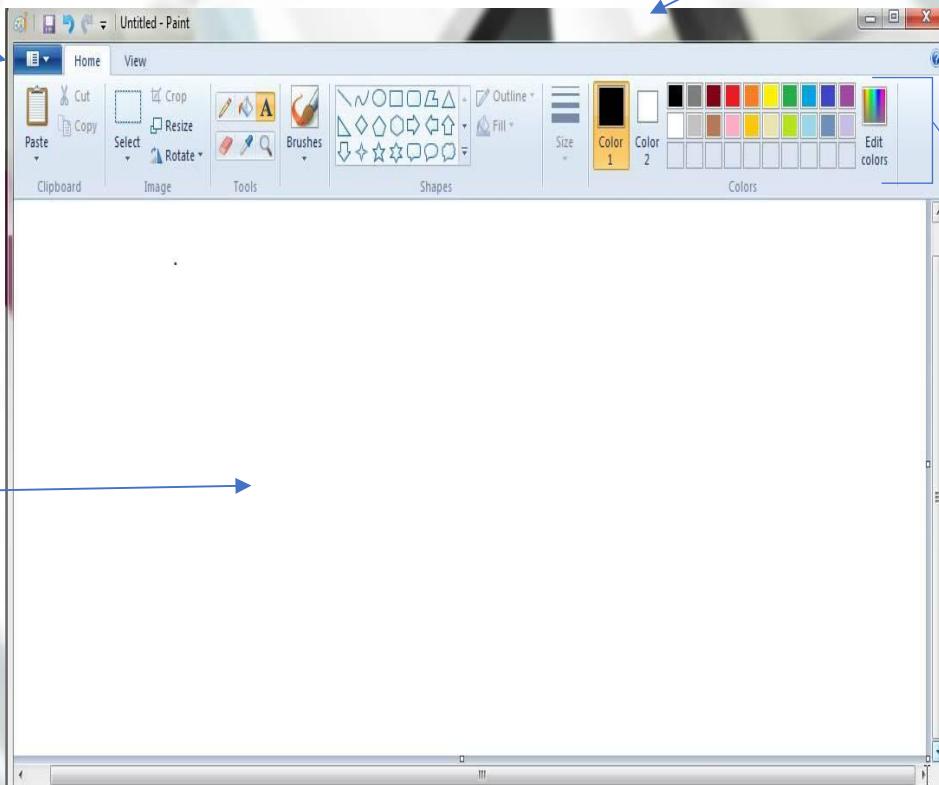
4. Ribbon

Paint button

Title bar

Drawing Area

Ribbon



## Chapter – 7 PAINT TOOLS



A. Tick the correct answers .

1. To draw a circle we use the

a. **Oval tool**



b. Line tool



2. To draw a square we use the

a. Pencil tool



b. **Rectangle tool**



3. The shapes group on the ribbon has many

a. Colors



b. **shapes**



4. We find the save option on clicking the

a. **Paint button**



b. Open button



**B. Write T for true and F for false.**

i. We can draw a rectangle using the Oval tool.

ii. When we click on the Shape fill tool , a list of fill styles open.

iii. The Shapes group has only one shape tool.

iv. We use the paint program to do sums .



( F )

( T )

( F )

( F )

**C. Name the tools .**

1.

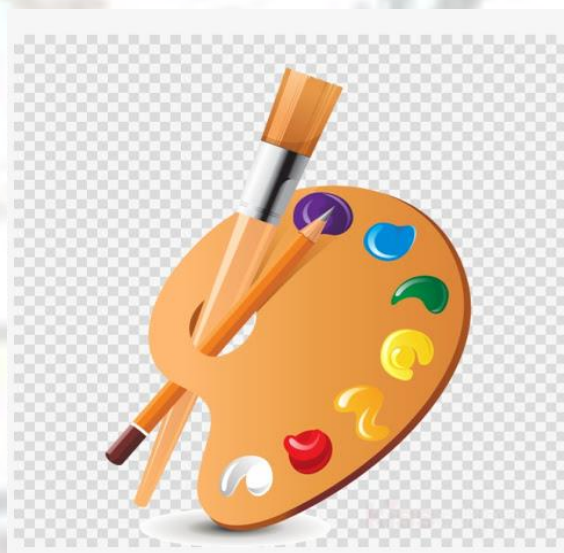


= Oval tool

2.



= Fill the colour tool



**D. Answer these questions.**

1. Name any two tools found in Shapes group.

Ans: Five star tool and oval tool .

2. Which tool do we use to draw a circle?

Ans: Oval tool.

3. Which option in the Colours group do we use to select an outline colour ?

Ans: Black colour.



**THANK YOU**