



SUMMATIVE ASSESSMENT ASSIGNMENT -I 2021-22

Grade – III

Subject- Computer

Syllabus – CH-1 to 4 From TEXTBOOK

Q.1 Tick the correct option:

- The data we type into a computer act as _____.
a. **Input** b. Output
- We use this device to give input.
a. Monitor b. **Keyboard**
- This device shows us the output.
a. Mouse b. **Monitor**
- The parts of computer that we can see and touch are called
a. **Hardware** b. Software
- These are used to enter data and give instructions to the computer.
a. Output devices b. **Input devices**
- The output we get on paper is called
a. Soft copy b. **Hard copy**
- The desktop background is also called
a. **Wallpaper** b. Theme
- The long bar at the bottom of the desktop is called
a. **Taskbar** b. Scroll bar
- On which side of the screen is the Show desktop button located?
a. Left b. **Right**
- The Save command is present under the
a. **File tab** b. Home tab
- MS Word is a
a. **Word processor** b. Hardware
- This option is used to exit MS Word.
a. Save as b. **Exit**



Q.3 Fill in the blanks:






1. An _____ system manages the working of computer. (**operating**/taskbar)
2. Microsoft system is a popular _____ system. (**operating**/cycling)
3. An _____ stands for a file, folder or program. (wallpaper/**icon**)
4. We use _____ to draw and color pictures. (keyboard/**mouse**)
5. _____ looks like television. (**Monitor**/CPU)
6. We use _____ to print output on a paper. (microphone/**printer**)
7. An _____ stands for a file, folder or program. (wallpaper/**icon**)
8. We use _____ to draw and color pictures. (keyboard/**mouse**)
9. _____ is used to record sound into a computer. (**Microphone**/Speaker)
10. Hardware needs _____ to work. (**instructions**/mouse)

Q.4 Match the columns.

- | | | |
|---------------|---|--|
| 1. Microphone | → | a. Help to type words, numbers & character |
| 2. Keyboard | → | b. Help to listen sound from computer |
| 3. Speaker | → | c. Input a page from a book |
| 4. Scanner | → | d. Process data |
| 5. CPU | → | e. Records Sound |

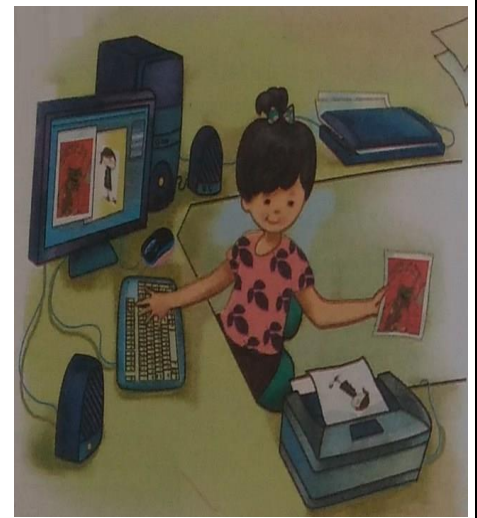


Q.4 Match the columns. (with pictures)

- | | | |
|---------------|---|--|
| 1. Keyboard | → | a.  |
| 2. Monitor | → | b.  |
| 3. Speaker | → | c.  |
| 4. Microphone | → | d.  |
| 5. Mouse | → | e.  |

Q.5 Write T for true and F for False.

1. MS paint is a word processor. **F**
2. The ribbon has three parts-Files, tabs and groups. **T**
3. The file tab is the first tab on the ribbon. **F**
4. The status bar is present at the bottom of the word window. **T**
5. The vertical scroll bar is on the left side of the word window. **F**



Q.6 Circle the correct answer.

1. Microsoft windows/Microsoft paint is an operating system.
2. The background picture of the desktop is called the wallpaper/Chart paper.
3. The long bar at the bottom of the desktop is called the space bar/taskbar
4. The start button is located at the bottom left /right corner of the taskbar.
6. Clicking on the start button displays a list of programs/folders.
7. Shikha made a drawing. The output can be seen on a (**Monitor** / Speaker).
8. Gigi wants to print a letter. The output will be given by a (**Printer** / Mouse).
9. Misha wants to add 7 and 10. The processing will be done by a (**CPU** / Monitor).

Q.7 Give two examples of the following.

1. Operating systems **MS windows, Linux**
2. Parts of a desktop **Title bar, Start button**
3. Desktop icons **Files, Folders**



TECHNOLOGY

Q.8 Answer the following questions:

1. Name any two commands present under the file tab?

Ans: Save and New

2. How can we use the scroll bars?

Ans: We can use scroll bars to move the document area.

3. What is Taskbar?

Ans: It is the long bar at the bottom of the desktop.

4. What is hardware?

Ans: Parts of computer that can be touched are called hardware.

5. What is the full form of I-P-O?

Ans: Input-Process-Output.

6. When we press the power button, it starts loading its operating system. What is it called?

Ans: Booting.

7. Name some of the Input and output devices.

Ans: Input devices-keyboard and mouse

Output devices-Monitor and printer.

8. What the data tells us is called?

Ans: Information.



