



पुर्णा International School

Shree Swaminarayan Gurukul, Zundal

Class -II

EVS

Specimen Copy

Year- 2022-23

Chap -12

My Neighbourhood

* New Words

- 1- Neighbourhood
- 2- Help
- 3- Service
- 4- Automatic
- 5- Quickly
- 6- Control
- 7- Guard
- 8- Faraway
- 9- Transport
- 10- Safe
- 11- Important
- 12- Letter



* Answer the following questions:-

Q-1 Where do we keep our money?

A-1 We keep our money in the bank.

Q-2 Whom do we call if there is a fire?

A-2 We call the fireman from fire station.

Q-3 Who look after us in a hospital?

A-3 Nurse look after us.



* Activity:- Draw the picture of any building and fill the colours.





*** Write 7-8 sentences on the topic “ My School” :-**

- 1) The name of my school is Puna International School Gurukul.
- 2) I study in class II.
- 3) Our teachers teach us very well.
- 4) It has a big playground .
- 5) My school building is beautiful wide and airy.
- 6) It has one library and one computer lab.
- 7) It has many classroom.
- 8) I love my school very much.



Pencil box



Lunch Box

Chap- 14 Kinds of work

* New Words:-

- 1- Money
- 2- Complete
- 3- Greengrocer
- 4- Blacksmith
- 5- Stitches
- 6- Potter
- 7- Cobbler
- 8- Plumber
- 9- Chemist
- 10- Tailor



* Match the following:-

- | | | |
|----------------|---|-----------------------|
| 1- Teacher | → | shows magic |
| 2- Magician | → | teaches students |
| 3- Milkman | → | paints buildings |
| 4- Painter | → | bring milk |
| 5- Clown | → | cook food |
| 6- Chef | → | do funny things |
| 7- Cobbler | → | make things from iron |
| 8- Black smith | → | mend shoes |

* Answer the following questions:-

Q-1 Name the people who make the things.

A-1 Potter, blacksmith, tailor.

Q-2 Who sell the medicines?

A-2 A chemist sells medicines.

Q-3 Who mend broken taps?

A-3 A plumber mends broken taps.



*** Who am I:-**

- | | |
|------------------------------------|-----------------------------------|
| 1- I bake cakes and breads - | I am a <u>baker</u> . |
| 2- I look after sick people - | I am a <u>nurse</u> . |
| 3- I fix taps - | I am a <u>plumber</u> . |
| 4- I fly planes - | I am a <u>pilot</u> . |
| 5- I grow crops - | I am a <u>farmer</u> . |
| 6- I keep our surroundings clean - | I am a garbage <u>collector</u> . |
| 7- I keep our plants green - | I am a gardener. |
| 8- I Fix cars - | I am a mechanic. |

*** Draw the picture of pot and fill the colours.**



Chap - 15

Plants : Our Friends

*New Words:-

- 1-Hard
- 2-Branches
- 3-Shrub
- 4-Stem
- 5-Climber
- 6-Support
- 7-Float
- 8-Root
- 9-Herb
- 10-Straight
- 11-Grapevine
- 12-Leaves



* Fill in the blanks:-

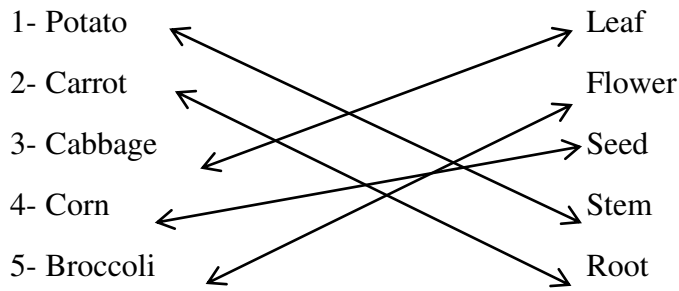
- 1- The hard, strong stem of a tree is called its trunk .
- 2- Herbs live for a few months .
- 3- Climbers take support of a wall or a stick to stand straight.
- 4- Mint is a herb .
- 5- Rose and tulsi are examples of shrubs .

* Give some examples each of the following:-

- | | |
|-------------|--------------------------------------|
| 1- Shrubs | rose, tulsi , cotton |
| 2- Herbs | coriander , mint , spinach |
| 3- Climbers | pea plant , money plant , bean plant |
| 4- Trees | Mango, Neem, Banyan |



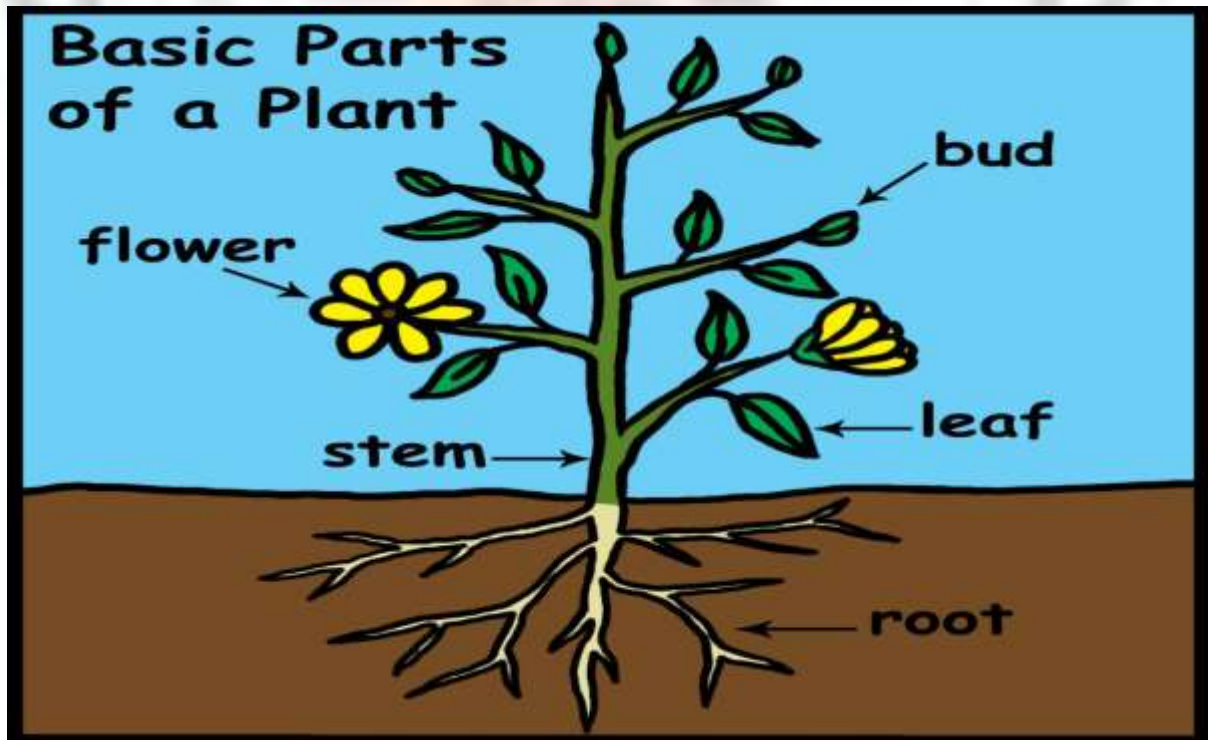
*** Match the following :-**



***Edible parts of a plant:-**

- 1- Root - turnip , carrot, radish
- 2- Seeds - corn, rice, wheat
- 3- Stem - ginger, sugarcane, potato
- 4- Leaves - mint, spinach, cabbage
- 5- Fruits - banana, mango, apple
- 6- Flower - cauliflower, broccoli

*** Activity:- Draw the picture of plant and label its parts:-**



Chap- 16

Animals : Our Friends

* New Words:-

- 1- Guard
- 2- Domestic
- 3- Fibre
- 4- Fields
- 5- Fresh
- 6- Regular
- 7- Carry
- 8- Bullocks
- 9- Domestic
- 10- Wild
- 11- Jungle
- 12- Flesh



* Name the followings:-

- 1- Two domestic animals .

Cow , Goat.

- 2- Two pet animals .

Cat , Dog .

- 3- The animal that give us wool.

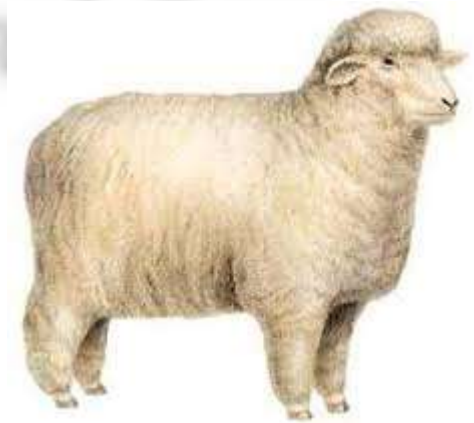
Sheep .

- 4- The animal that carry heavy loads for us.

Elephant , Horse .

- 5- The animal that helps to plough the field.

Bullock .



*** Answer the following questions:-**

Q-1 What are domestic animals?

A-1 Animals that live in our homes and on farms are called domestic animals.

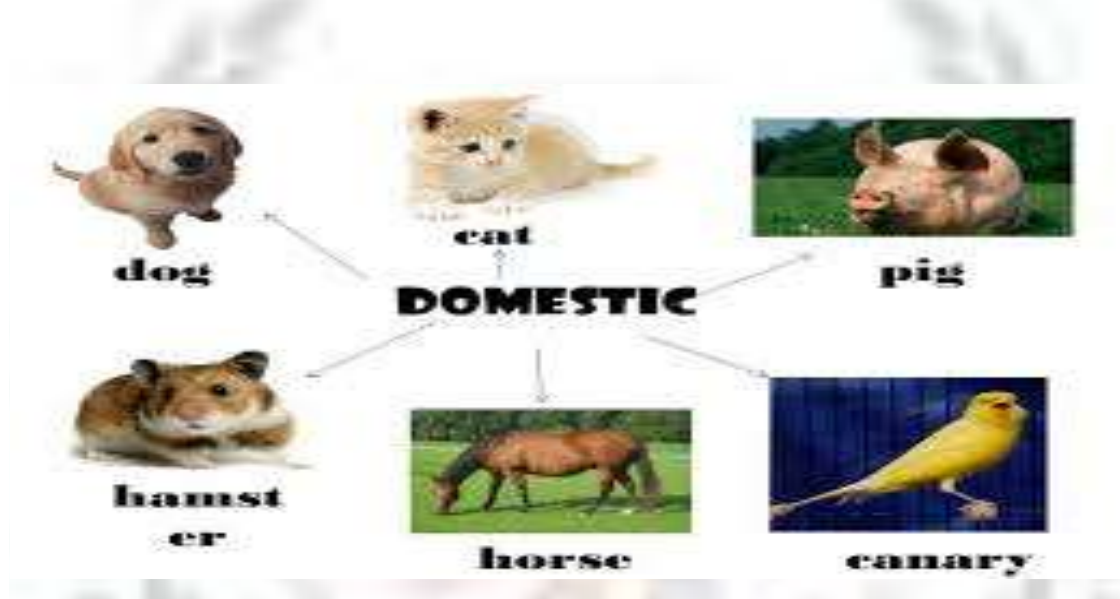
Q-2 Write the name of flesh eater animals.

A-2 Lion, tiger and leopards .

Q-3 Which animal is the ship of the desert?

A-3 Camel.

*** Activity:- Draw / paste the picture of domestic and wild animals.**



Wild Animals



Chap – 17

How to Travel

*New Words:-

1- Walk

2- Transport

3- Cover

4- Vehicles

5- Desert

6- Modern

7- Carts

8- Invented

9- Forest

10- Place

11- Distance

12- Carriage

13- Journey



* Write 'yes' or 'no'.

1- Vehicles can only be used on the roads. [no]

2- Vehicles can be used for carrying people only . [no]

3- Air transport is the fastest mode of transport. [yes]

4- Cars move faster than cycles. [yes]

5- Ships can run on land. [no]

* Answer the following questions:-

Q-1 Write the modes of transport.

A-1 There are mainly three modes of transport- land transport, water transport and air transport.

Q-2 Name the vehicle used to put out fire.

A-2 A fire engine is used to carry water to a place to put out fires.

Q-3 Write the name of some special vehicles.

A-3 Some vehicles are used for some special purposes.

For ex- Ambulance , Fire engine , Crane, Road roller.

<https://www.youtube.com/watch?v=WbYgf-2iXCc>

***Activity:- Draw / paste the picture of means of water transport.**



Chap- 18

Safety habits

* New Words:-

- 1- Footpath
- 2- Cross
- 3- Crossing
- 4- Queue
- 5- Signals
- 6- Swimming
- 7- Tube
- 8- Deep
- 9- Safety
- 10- Zebra crossing
- 11- Climb
- 12- Follow



* Fill in the blanks:-

- 1- We must follow safety rules everywhere.
- 2- Always use a swimming tube when you going to swim.
- 3- We never play on the road .
- 4- We should cross the road at zebra crossing .
- 5- Never try to catch a moving bus .

* Safety tips when you are going to school by bus:-

- 1 - Wait in a queue with other children for the bus.
- 2 - Everyone gets into the bus one by one.
- 3-Once inside the bus, the children do not lean out of the door or window.
- 4- Do not get in or get out of a moving bus.

*** Activity :- Draw the picture of traffic lights.**



Chap - 19
Our Earth

*** New Words:-**

- 1- Earth
- 2- Mountain
- 3- Plains
- 4- Deserts
- 5- Pollution
- 6- Surface
- 7- Highland
- 8- Valley
- 9- Environment
- 10- Crops
- 11- Around
- 12- Vehicles



*** Choose the correct answer:-**

- 1- Crops are grown in the-
(a) Forest (b) fields (c) rivers
- 2- Earth day is celebrated on-
(a) 5th May (b) 14th November (c) 22nd April
- 3- The shape of Earth-
(a) Round (b) oval (c) square
- 4- Very high hills are called-
(a) Valley (b) mountain (c) hill

*** Fill in the blanks.**

- 1- Our earth is made of land and water.
- 2- Flat land is called a plain.

3- The lowland between two hills is called a **valley**.

4- There is **air** around the earth.

5- **Pollution** makes our environment impure.

*** Answer the following questions:-**

Q-1 From which things our Earth is made up off?

A-1 Our Earth is made up of land and water.

Q-2 What is a mountains?

A-2 Very high hills are called mountains.

Q-3 What is a valley?

A-3 The low land between two hills is called a valley.

Q-4 What are the different types of pollution?

A-4 (a) Water Pollution

(b) Air Pollution

(c) Soil Pollution

(d) Noise Pollution

*** Writing skills- Our Earth**

1- We live on planet Earth.

2- We get air, water, food, shelter and everything from mother earth.

3- About 74% of the surface covered with water.

4- So people called it blue planet.

Activity:- Draw / Paste the picture of Globe:-



Chap - 20

Seasons

* New Words:-

- 1-Winter
- 2-Spring
- 3-Autumn
- 4-Woollen
- 5-Cotton
- 6-Rainfall
- 7-Weather
- 8-People
- 9-Affect
- 10-Breeze
- 11-Storm
- 12-Sloping



* Match the following:-

- | | | | |
|--------------|---|---|-------|
| 1-Gloves | ← | → | Feet |
| 2-Cap | ← | → | Chest |
| 3-Sunglasses | ← | → | Hands |
| 4-Boots | ← | → | Eyes |
| 5-Sweater | ← | → | Head |

* Tick [√] the true statements.

- 1-We should wear cotton clothes on a hot day . [√]
- 2-Umbrellas keep out rain and sun. [√]
- 3-Days are short and cold in summer. [x]
- 4-It is dangerous to go out in the cold. [√]
- 5-We wear woollen clothes in the rainy season. [x]

*** Answer the following questions:-**

Q-1 List the things you like to have on a hot day.

A-1 Ice creams , juices , cold drinks.

Q-2 What is a breeze?

A-2 A gentle wind is called a breeze.

Q-3 Which things are affected by the weather ?

A-3 The food we eat, clothes we wear and the things we do are affected by the weather.

Activity:- Draw the pictures of two seasons.

