



# Purnima International School

Shree Swaminarayan Gurukul, Zundal

## PERIODIC ASSESSMENT -1 2020-21

Grade -1

Subject- COMPUTER

Syllabus – CH-1,2 from textbook

A. Tick (✓) the correct answer.

1. Which of these is not a machine?

- a. Car      b. ostrich

2. Which of these needs electricity to work?

- a. Fan      b. Sharpener

3. Which of these does not need electricity to work?

- a. Hammer      b. Refrigerator

4. Which of these has parts of a computer in it?

- a. Sharpener      b. Mobile

B. Fill in the blanks.

1. We can solve sums on a computer.
2. We can listen to music on a computer.
3. We can play games on a computer.
4. We can type and read on a computer.
5. Machines make our work easy
6. A computer is a smart machine.
7. A computer does not make mistake.
8. A desktop is a computer we keep on a table.

C. Tick (✓) the correct statements.

1. Mummy can cook food on a computer.      ×
2. Raman can type letters on a computer.      ✓
3. Vipul can toast bread on a computer.      ×
4. Joya can watch Chhota Bheem on a computer.      ✓
5. Ali can draw and colour pictures on a computer.      ✓

**D. Identify these places. Write the correct number under each picture.**

1. School

2. Railway Station

3. Office

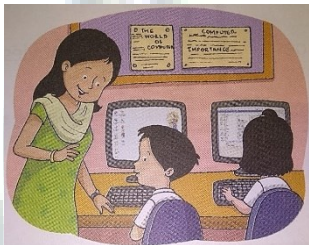


© Can Stock Photo - csp15899322



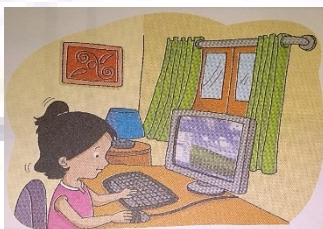
**E. Rearranged the letters to find the names of places where computers are used.**

1.



SCHOLO SCHOOL

2.



HMOE HOME

3.



AIROPRT AIRPORT

4.



SOHP SHOP

**F. Colour the monitors that show things we can do on a computer.**

solve sums

polish shoes

watch movies

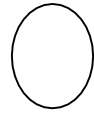
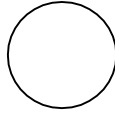
eat food

draw picture

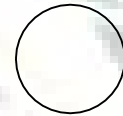
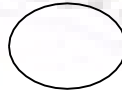
play games

G. Tick ( ) the machine used to

1. Wash clothes.



2. Sharpen a pencil.



3. trim our nails

