



Student Name				
Date	18/07/2020	Grade	I -	Roll no-
Subject	Computer	Marks	25	Teacher's Sign

PERIODIC ASSESSMENT – I [2020-21]
GENERAL INSTRUCTION

1. All the Questions are Compulsory Questions.
2. All the Parts of Questions must be attempted at one Place

Q.1 Tick (✓) the correct answer.

[Marks- 4]

1. Which of these is not a machine?
a. Car b. ostrich
2. Which of these needs electricity to work?
a. Fan b. Sharpener
3. Which of these does not need electricity to work?
a. Hammer b. Refrigerator
4. Which of these has parts of a computer in it?
a. Sharpener b. Mobile

Q.2 Fill in the blanks.

[Marks – 5]

[Read, computer, listen, sums, play]

1. We can solve _____ on a computer.
2. We can _____ music on a computer.
3. We can _____ games on a computer.
4. We can type and _____ on a computer.
5. A _____ is a smart machine.

Q.3 Tick (✓) the correct statements.

[Marks – 4]

1. Mummy can cook food on a computer.
2. Raman can type letters on a computer.

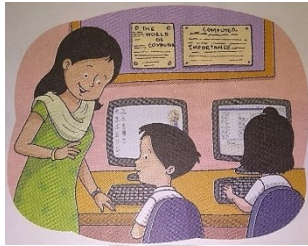
3. Vipul can toast bread on a computer.

4. Joya can watch Chhota Bheem on a computer.

Q.4 Rearranged the letters to find the names of places where computers are used.

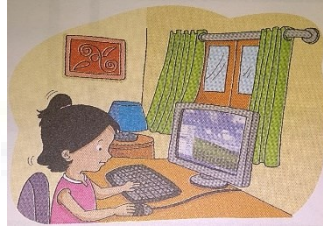
[Marks – 4]

1.



SCHOLO _____

2.



HMOE _____

3.



AIROPRT _____

4.



SOHP _____

Q.5 Identify these places. Write the correct number under each picture. [Marks – 3]

1. School

2. Railway Station

3. Office



© Can Stock Photo - csp15899322



Q.6 Colour the monitors that show things we can do on a computer.

[Marks – 3]

solve sums

polish shoes

watch movies

eat food

draw picture

play games

Q.7 Color the picture.

[Marks – 2]

