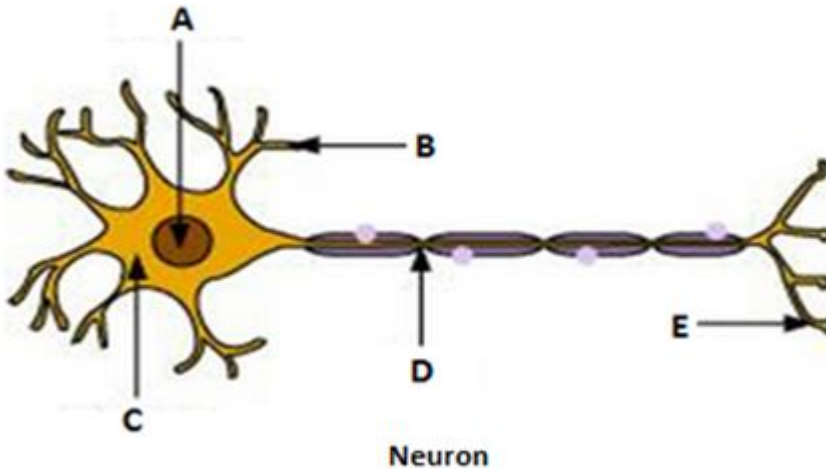




Chose the correct answer and write in the given space:

1. Given below is a diagram showing the structure of a neuron tissue.



Choose the correct labeling for the parts A, B, C, D and E.

- (a) A – Nucleus; B – Cell body; C – Dendrite; D – Axon; E – Nerve ending.
- (b) A – Nucleus; B – Dendrite; C – Cell body; D – Nerve ending; E – Axon.
- (c) A – Nucleus; B – Axon; C – Cell body; D – Dendrite; E – Nerve ending.
- (d) A – Nucleus; B – Dendrite; C – Cell body; D – Axon; E – Nerve ending

Answer: _____

2. Lysosome is a cytoplasmic organelle containing enzymes that break down biological polymers. Lysosomes function as the digestive system of the cell. It is also called the suicide bag of the cell because:

- (a) It causes any cell to commit suicide
- (b) Its enzymes digest the cell itself
- (c) Its enzymes kill surrounding cells
- (d) All of the above

Answer: _____

3. While doing work and running, you move your organs like hands, legs, etc. Which among the following is correct?

- (a) Smooth muscles contract and pull the ligament to move the bones
- (b) Smooth muscles contract and pull the tendons to move the bones
- (c) Skeletal muscles contract and pull the ligament to move the bones

(d) Skeletal muscles contract and pull the tendon to move the bones

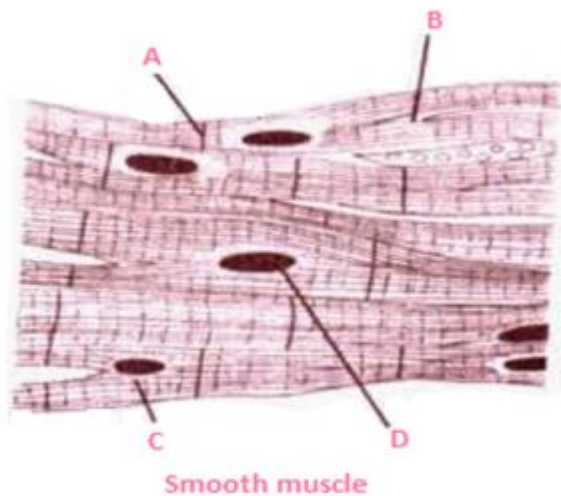
Answer: _____

5. Cardiac muscle is one of the three major types of muscles, the others being skeletal and smooth muscles. It is found in the walls and histological foundation of the heart. Which one of the following statements is not related to the cardiac muscles?

- (a) They muscles show rhythmic contraction and relaxation throughout life.
- (b) They do not work according to our will, so they are called involuntary muscles.
- (c) They are non-striated, multinucleated and branched muscles.
- (d) The contraction and relaxation of the heart muscles help to pump and distribute blood to different parts of the body.

Answer: _____

5. In a test of biology a figure of smooth muscle labeled as A, B, C and D for different parts of the muscles. Four students P, Q, R and S in a way to attempt the question named the four parts as given below. But only one student could name all the four parts correctly.



Which of the following options is the answer written by that student?

- (a) A – Intercalated disc; B – Sarcoplasm; C – Branched fibres; D – Nucleus
- (b) A – Intercalated disc; B – Branched fibres; C – Sarcoplasm; D – Nucleus
- (c) A – Branched fibres; B – Intercalated disc; C – Sarcoplasm; D – Nucleus
- (d) A – Branched fibres; B – Sarcoplasm; C – Intercalated disc; D – Nucleus

Answer: _____

7. Which of the following statements is incorrect?

- i. Parenchyma tissues have intercellular spaces.

- ii. Collenchymatous tissues are irregularly thickened at corners.
- iii. Apical and intercalary meristems are permanent tissues.
- iv. Meristematic tissues, in its early stage, lack vacuoles.

- (a) (i) and (ii)
- (b) Only (iii)
- (c) (iii) and (iv)
- (d) Only (ii)

Answer: _____

8. Xylem is the specialized tissue of the plants that transports water and nutrients from the soil to the upper parts like stems and leaves of plant and provides mechanical support to them. It is composed of four different types of the cells. Which of the following is not one a type of cell found in xylem tissues?

- (a) Tracheids
- (b) Vessels
- (c) Xylem parenchyma
- (d) Sieve tubes

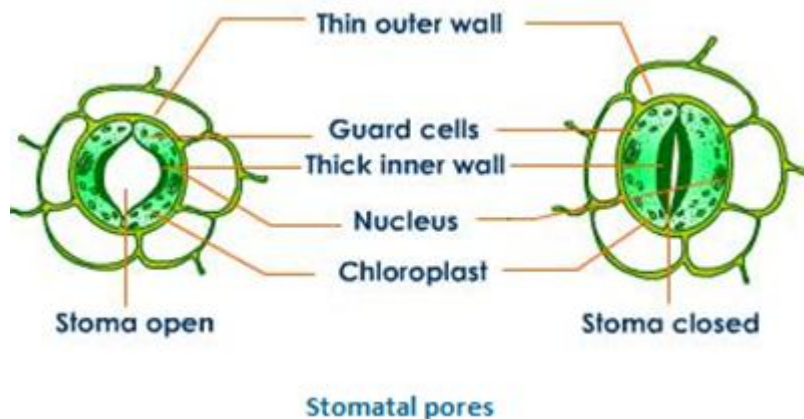
Answer: _____

9. A person met with an accident in which two long bones of his hand were dislocated. Which among the following may be the possible reason for this?

- (a) Tendon breaks
- (b) Break of skeletal muscles tissue
- (c) Ligament breaks
- (d) Areolar tissue breaks

Answer: _____

10. Tiny pores are found on the surface of the leaves of plants. These pores are called stomata. These stomata surrounded by the kidney shaped guard cells provide many vital functions to the plants.



Which of the following functions is not served by the stomata for the plants?

- (a) Exchange of gases, particularly CO₂ and O₂, with atmosphere
- (b) Loss of water in the form of vapours during transpiration
- (c) Helps to create pressure for the water to rise upward, by its process of transpiration
- (d) Helps the leaves to carry out the process of photosynthesis

Answer: _____

11. Epithelial tissue always has an exposed outer surface and an inner surface anchored to connective tissue by a thin, non-cellular structure called the

- (a) Nonstratified layer
- (b) Stratified layer
- (c) Basement membrane
- (d) Fibroblast

Answer: _____

12. Meristematic tissues are those which help in increasing the length and girth of the plant. Which of the following statements given below is correct about the meristematic tissue?

- (a) It is made up of cells that are incapable of cell division
- (b) It is made up of cells that are capable of cell division
- (c) It is composed of single type of cells
- (d) It is composed of more than one type of cells

Answer: _____

13. Connective tissues are the tissues that help to bind or connect other tissues in the body. They have widely spaced cells embedded in a matrix having a variety of proteins, polysaccharides and mineral salts. Can you identify the connective tissues among the following?

- i. Ligament
 - ii. Epithelium
 - iii. Tendon
 - iv. Blood
- (a) Both (i) and (iii)
 - (b) (i), (ii) and (iii)
 - (c) (i), (iii) and (iv)
 - (d) All (i), (ii), (iii) and (iv)

Answer: _____