



पुनना International School

Shree Swaminarayan Gurukul, Zundal

SUMMATIVE ASSIGNMENT – 2 [2021-22]

Grade – 2

Sub- Evs

Syllabus – Ch- 12,14,15,16,17,19,20

- Choose the correct answer.

1- Crops are grown in the-

- (a) Forest (b) **Fields** (c) Rivers

2- Earth day is celebrated on-

- (a) 5th May (b) 14th November (c) **22nd April**

3- The shape of Earth-

- (a) **Round** (b) Oval (c) Square

4- Very high hills are called-

- (a) Valley (b) **Mountain** (c) Hill

5- A gentle wind called-

- (a) Storm (b) **Breeze** (c) Air

6- Moving air is called-

- (a) **Wind** (b) Storm (c) Breeze

7- Hot winds called –

- (a) Air (b) **Loo** (c) Wind

8- Highland which is flat on top is called a-

- (a) Valley (b) Plain (c) **Plateau**

9- Lotus grow in –

- (a) **Water** (b) Mud (c) Desert

10- Flat land is called –

- (a) Hills (b) **Plain** (c) Mountain

11- The ship of the desert is –

- (a) Elephant (b) **Camel** (c) Sheep

12- Animals lives in jungle. They are called –

(a) Pet (b) Domestic (c) **Wild**

13- Paper is made up of _____ tree.

(a) Mango tree (b) **Bamboo** (c) Grass

14- Cactus is a _____ plant.

(a) **Desert** (b) Water (c) Creeper

15- Shrubs have _____ stem.

(a) Hard (b) **Soft** (c) Strong

• **Fill in the blanks.**

1- The hard, strong stem of a tree is called its **trunk**.

2- Herbs live for a few **months**.

3- **Climbers** take support of a wall or a stick to stand straight.

4- Mint is a **herb**.

5- Rose and **tulsi** are examples of **shrubs**.

6- Our earth is made of **land** and **water**.

7- Flat land is called a **plain**.

8- The lowland between two hills is called a **valley**.

9- There is **air** around the earth.

10- **Pollution** makes our environment impure.

• **Write “T” for true and “F” for false.**

1- We should wear cotton clothes on a hot day. [T]

2- Umbrellas keep out rain and sun. [T]

3- Days are short and cold in summer. [F]

4- It is dangerous to go out in the cold. [T]

5- We wear woollen clothes in the rainy season. [F]

6- Vehicles can only be used on the roads. [T]

7- Vehicles can be used for carrying people only. [F]

8- Air transport is the fastest mode of transport. [T]

9- Cars move faster than cycles. [T]

- 10- Ships can run on land. [F]
 11- A bear eats both plants and animals. [F]
 12- Dogs guard our home. [T]
 13- Domestic animals live in jungle. [F]
 14- A mason's work is to fix pipes and taps. [F]

• **Match the following.**

- | | |
|---------------|--------|
| 1- Potato | Leaf |
| 2- Carrot | Flower |
| 3- Cabbage | Seed |
| 4- Corn | Stem |
| 5- Broccoli | Root |
| 6- Gloves | Feet |
| 7- Cap | Chest |
| 8- Sunglasses | Hands |
| 9- Boots | Eyes |
| 10- Sweater | Head |

• **Circle the correct word.**

(A)

- | | | | |
|------------------------|-------------|--------------|-----------|
| 1. Nurse => | post office | fire station | hospital. |
| 2. Letters => | policeman | postman | fireman. |
| 3. Postcards => | bus station | post office | school. |
| 4. Ginger => | flower | stem | fruit. |
| 5. Carrot => | seed | leaf | root. |
| 6. Spinach => | tree | leaf | seed. |

(B) **Circle the odd one in each group.**

- | | | | |
|--------------------|-------|--------|----------|
| 1. Pilot => | baker | driver | captain. |
|--------------------|-------|--------|----------|

- | | | | |
|-----------------|-----------|------------|-----------|
| 2. Boat => | ship | canon | aeroplane |
| 3. Camel => | elephant | rocket | mule. |
| 4. Rickshaw => | bus | van | truck. |
| 5. Aeroplane => | ambulance | helicopter | jet |
| 6. Car => | scooter | motorcycle | cycle |

• Give some examples each of the following.

- 1- Shrubs- rose, tulsi, cotton
- 2- Herbs- coriander, mint, spinach
- 3- Climbers- pea plant, money plant, bean plant
- 4- Trees- mango, neem, banyan

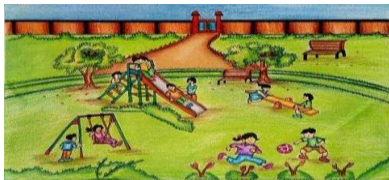
• Edible parts of a plant.

- 1- Root- turnip , carrot, radish
- 2- Seeds- corn, rice, wheat
- 3- Stem- ginger, sugarcane, potato
- 4- Leaves- mint, spinach, cabbage
- 5- Fruits- banana, mango, apple
- 6- Flower- cauliflower, broccoli

• Name the followings.

- 1- Two domestic animals. - Cow, Goat
- 2- Two pet animals. - Cat, Dog
- 3- The animal that give us wool. - Sheep
- 4- The animal that carry heavy loads for us. - Elephant, Horse
- 5- The animal that helps to plough the field. - Bullock

• Identify the places and write the name.



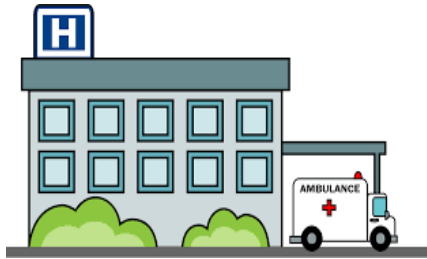
Park



School



Market



Hospital



Bank



Post office

- Answer the following questions.

Q-1 What are domestic animals?

A- **Animals that live in our homes and on farms are called domestic animals.**

Q-2 Write the name of flesh eater animals.

A- **Lion, tiger and leopards.**

Q-3 Which animal is the ship of the desert?

A- **Camel.**

Q-4 From which things our Earth is made up off?

A- **Our Earth is made up of land and water.**

Q-5 What is a mountains?

A- **Very high hills are called mountains.**

Q-6 What is a valley?

A- **The low land between two hills is called a valley.**

Q-7 What are the different types of pollution?

- Water Pollutio**
- Air Pollution**
- Soil Pollution**
- Noise Pollution**

Q-8 What is a breeze?

A- **A gentle wind is called a breeze.**

Q-9 Which things are affected by the weather?

A- **The food we eat, clothes we wear and the things we do are affected by the weather.**

Q-10 Where do we keep our money?

A- **We keep our money in the bank.**

Q-11 Whom do we call if there is a fire?

A- We call the fireman from fire station.

Q-12 Who look after as in a hospital?

A- Nurse look after us.

Q-13 Name the people who make the things.

A- Potter, blacksmith, tailor.

Q-14 Who sell the medicines?

A- A chemist sells medicines.

- Identify the pictures and write the name.



Doctor



Painter



Plumber



Teacher



Cobbler



Greengrocer



Tailor



Blacksmith



Potter

- Identify the kinds of plants and write the name.



Tree



Shrub



Herb



Creeper



Climber

- **Paragraph on Safety Rules.**

- 1- Cross the road only at the zebra crossing.
- 2- Never play on or near the road.
- 3- Always walk on the footpath.
- 4- Follow traffic signals.
- 5- Take turns to play and give a chance to others.
- 6- Do not go near someone who is swinging.
- 7- Never climb up the front of a side.
- 8- Do not touch to electric wires.
- 9- Do not get in or get out of a moving bus.
- 10- Wait in a queue.

- **Writing skills- “Our Earth”**

- 1- We live on planet Earth.
- 2- We get air, water, food, shelter and everything from mother earth.
- 3- About 74% of the surface covered with water.
- 4- So people called it blue planet.

