



**Purnima International School**

Shree Swaminarayan Gurukul, Zundal

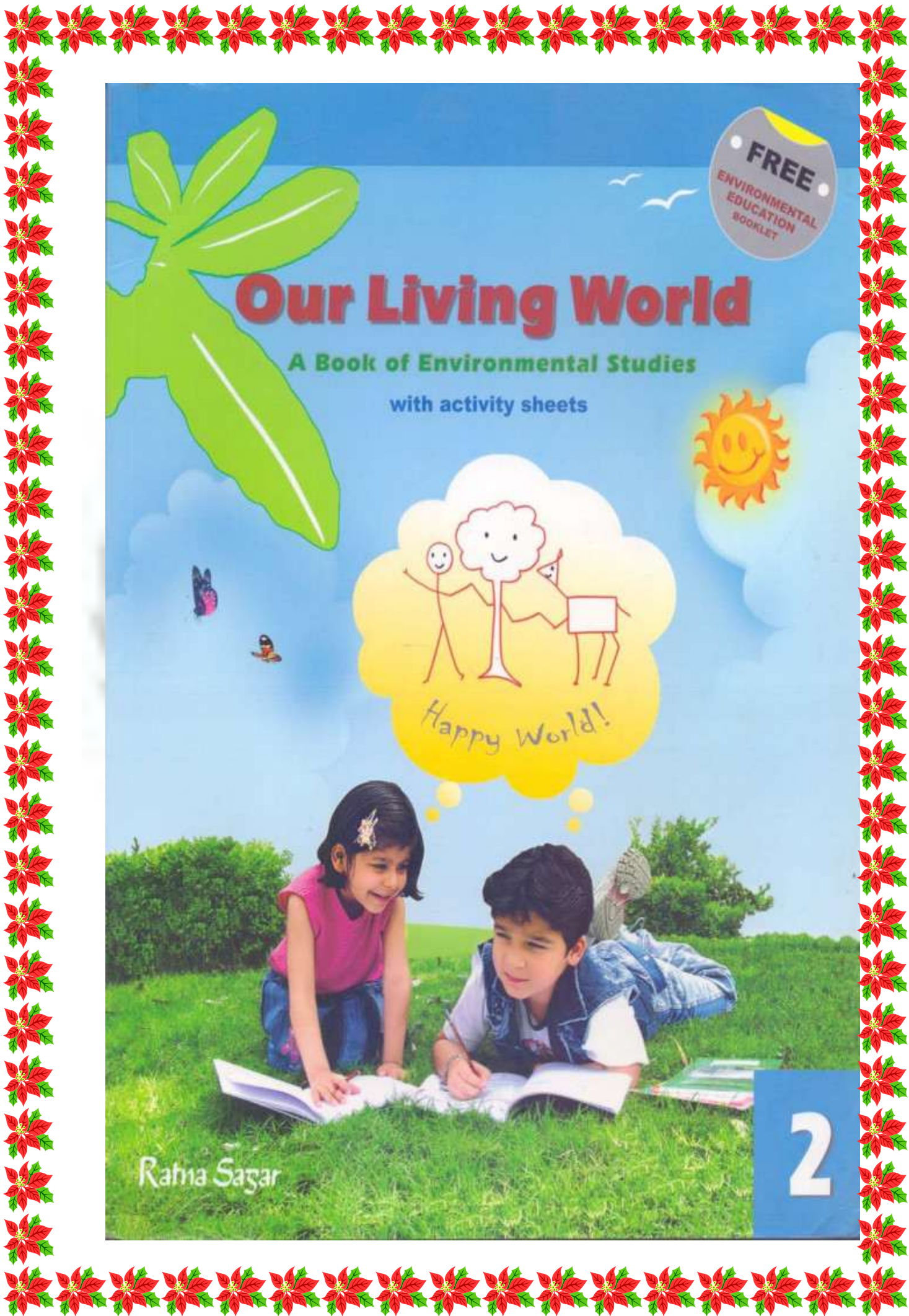
*Class -II*

*EVS*

*Specimen Copy*

*Year- 2020-21*





**FREE**  
ENVIRONMENTAL  
EDUCATION  
BOOKLET

# Our Living World

A Book of Environmental Studies

with activity sheets



Ratna Sagar

2

# CONTENTS



## UNIT ONE

1. I Love Myself 3
2. Our Wonderful Body 5
3. Growing Older 9

Activity Sheet 1 11



## UNIT TWO

4. Clothes for Us 12
5. Food for Us 16
6. Tools We Use 20
7. Healthy Habits 22

Activity Sheet 2 24



## UNIT THREE

8. Our Family 25
9. A House to Live in 27
10. I Love Festivals 32
11. Having Fun 37

Activity Sheet 3 40



## UNIT FOUR

12. My Neighbourhood 41
13. My School 46
14. Kinds of Work 48
15. Plants: Our Friends 50
16. Animals: Our Friends 56

Activity Sheet 4 61



## UNIT FIVE

17. How We Travel 62
18. Safety Habits 66

Activity Sheet 5 70



## UNIT SIX

19. Our Earth 71
20. Seasons 75

Activity Sheet 6 79

Test Paper 80

## Chap - 15

### Plants : Our Friends

#### \*New Words:-

- 1-Hard
- 2-Branches
- 3-Shrub
- 4-Stem
- 5-Climber
- 6-Support
- 7-Float
- 8-Root
- 9-Herb
- 10-Straight
- 11-Grapevine
- 12-Leaves

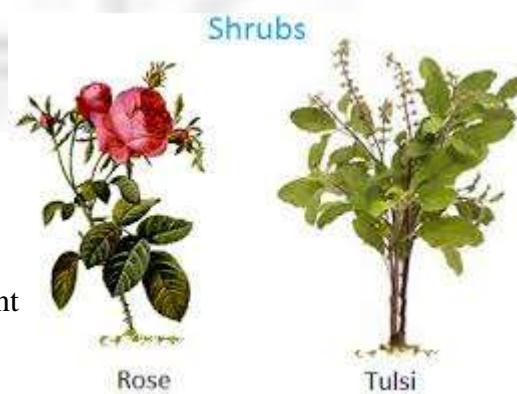


#### \* Fill in the blanks:-

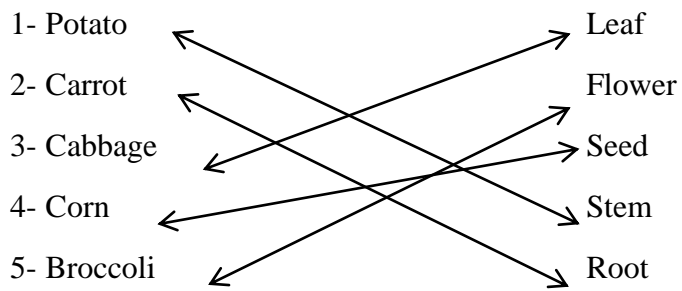
- 1- The hard, strong stem of a tree is called its trunk .
- 2- Herbs live for a few months .
- 3- Climbers take support of a wall or a stick to stand straight.
- 4- Mint is a herb .
- 5- Rose and tulsi are examples of shrubs .

#### \* Give some examples each of the following:-

- |             |                                      |
|-------------|--------------------------------------|
| 1- Shrubs   | rose, tulsi , cotton                 |
| 2- Herbs    | coriander , mint , spinach           |
| 3- Climbers | pea plant , money plant , bean plant |
| 4- Trees    | Mango, Neem, Banyan                  |



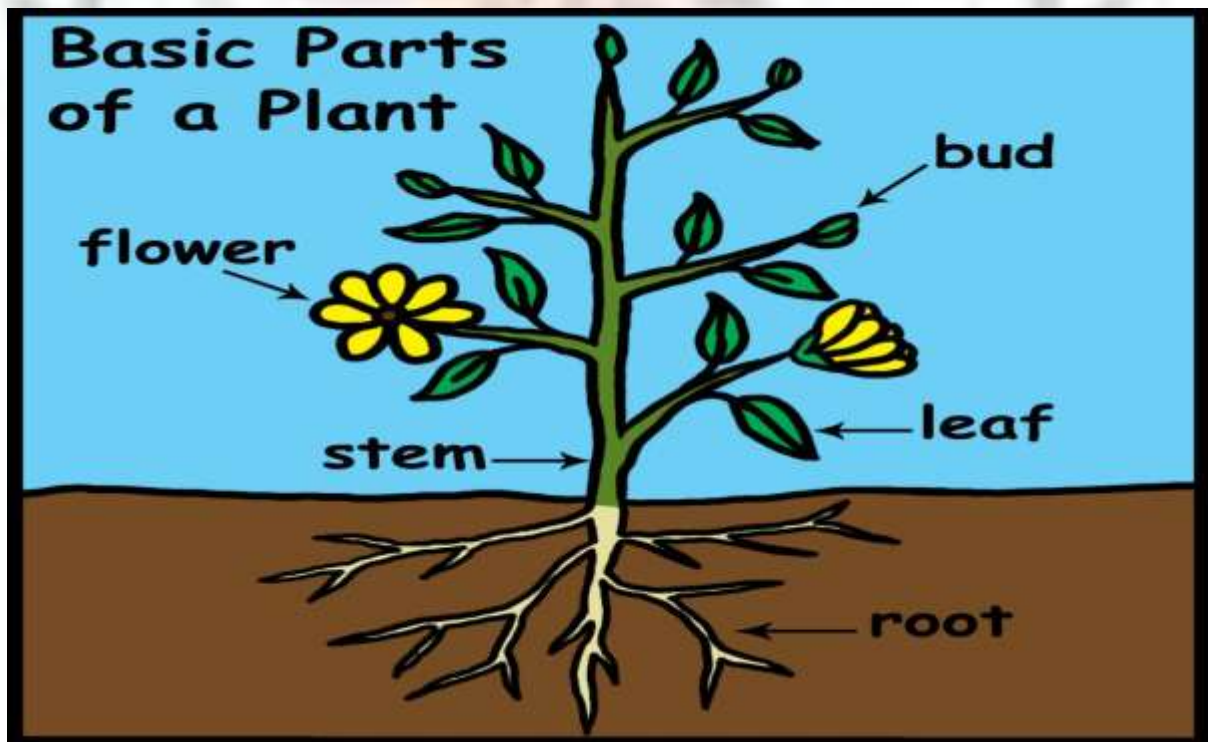
**\* Match the following :-**



**\*Edible parts of a plant:-**

- |           |                             |
|-----------|-----------------------------|
| 1- Root   | - turnip , carrot, radish   |
| 2- Seeds  | - corn, rice, wheat         |
| 3- Stem   | - ginger, sugarcane, potato |
| 4- Leaves | - mint, spinach, cabbage    |
| 5- Fruits | - banana, mango, apple      |
| 6- Flower | - cauliflower, broccoli     |

**\* Activity:- Draw the picture of plant and label its parts:-**



## Chap- 16

### Animals : Our Friends

#### \* New Words:-

- 1- Guard
- 2- Domestic
- 3- Fibre
- 4- Fields
- 5- Fresh
- 6- Regular
- 7- Carry
- 8- Bullocks
- 9- Domestic
- 10- Wild
- 11- Jungle
- 12- Flesh



#### \* Name the followings:-

- 1- Two domestic animals .

Cow , Goat.

- 2- Two pet animals .

Cat , Dog .

- 3- The animal that give us wool.

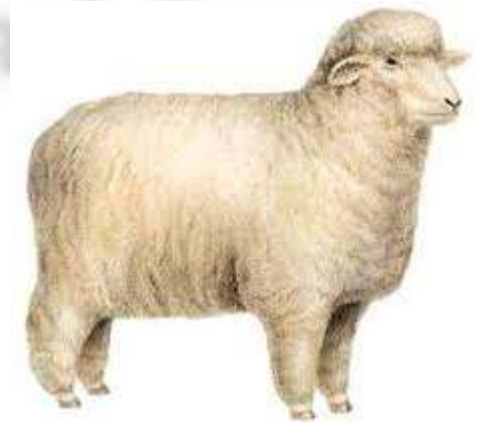
Sheep .

- 4- The animal that carry heavy loads for us.

Elephant , Horse .

- 5- The animal that helps to plough the field.

Bullock .



**\* Answer the following questions:-**

Q-1 What are domestic animals?

A-1 Animals that live in our homes and on farms are called domestic animals.

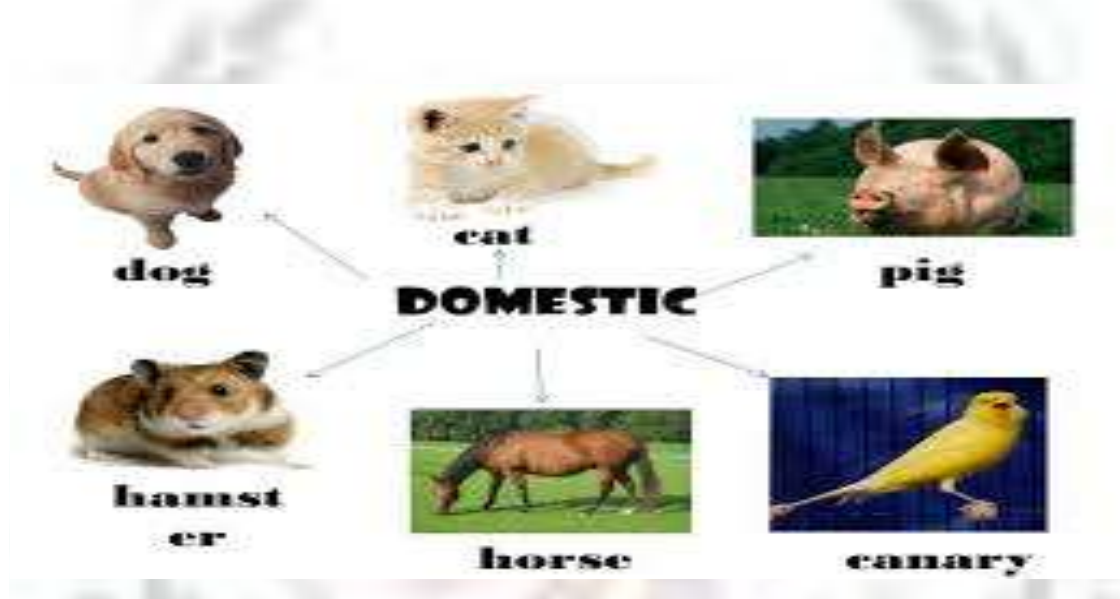
Q-2 Write the name of flesh eater animals.

A-2 Lion, tiger and leopards .

Q-3 Which animal is the ship of the desert?

A-3 Camel.

**\* Activity:- Draw / paste the picture of domestic and wild animals.**



### Wild Animals

